

# The W.R.E.N.

**Wapsi River Environmental News**

**Winter 2012**

**Scott County Conservation Board's Environmental Education Newsletter**

[www.scottcountyjowa.com/conservation/wapsi.php](http://www.scottcountyjowa.com/conservation/wapsi.php)

*The Wapsi River Center is owned, managed and operated by the Scott County Conservation Board with programming and development assistance from the Clinton County Conservation Board.*

## Wapsi Center Happenings

*by Dave Murcia, Director*

### Wapsi Center Deer Hunt

The Wapsi Center mentored youth deer hunt is underway and ends January 10, 2012. *The Wapsi River Center is open to the public during the hunt and will observe "No Hunt Zones" throughout the site.*

### Ecology Day - Outdoor Adventures

This year's theme was *Outdoor Adventures* and gave opportunities to experience both activities as well as wildlife-related adventures. The 20<sup>th</sup> annual event began with a paddle down the Wapsipinicon River with a nine canoe flotilla. Following the river adventure, participants chose from: orienteering (no one was lost!), wildlife, aquatic investigations, a woodland hike, outdoor cooking (thanks to the Q.C.N.A.G.S. ~ [www.qcnags.org](http://www.qcnags.org)), native atlatl demos, and back for a "pioneer vittles" dinner. The day ended with a celestial celebration and the Eastern Iowa Star Party. *Thanks to all who supported the annual event including the Quad City Natural Area Guardians!*

### Center Improvements

The *pond restoration* has made good progress this year and has included the dam replacement, grading & native seeding, and most recently, the concrete foundation for the waterside educational platform. Also underway is the *renovation of the Redtail Lodge kitchen*. The renovation includes new cabinets/counters, flooring/ceiling, sink, serving window, insulated walls and energy-efficient lights and windows. Also updated is an energy-efficient dishwasher and microwave.

Thank you to our skilled maintenance staff from *West Lake Park* and *Wapsi caretaker* for ensuring these

projects are meeting our needs!

### Eagle Scout Projects

Two Eagle Scout candidates have completed projects at the Wapsi River Center in support of both wildlife as well as the public.



*Ryan Seaba of Troop 82 (Bettendorf)* constructed an observation platform at the Menke Observatory site that is nestled in the center of the prairie areas. The platform will benefit many visitors including program participants, wildlife watchers and sky watchers.

*Aubrey Cover of Troop 6 (Davenport)* constructed a new birdfeeder and bench. The old feeder at the Eagle View Eco Center was a favorite feeding spot for wildlife and the well-visited, aging structure was in need of replacement. The bench is located in front of Retail Lodge just in time for anyone needing to rest or adjust their skis!



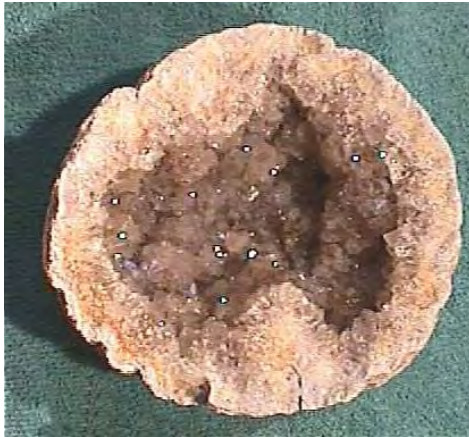
You can see the activity around Aubrey's project by viewing our birdfeeder cam at [www.scottcountyiowa.com/conservation/webcams.php](http://www.scottcountyiowa.com/conservation/webcams.php). Be sure to visit the Wapsi Center and enjoy the hard work these Scouts gave to benefit the Center.

## New Snowshoes!

Thanks to our *Friends of the Wapsi River* and the *Clinton County Conservation Board*, the Center now has 20 new pairs of snowshoes – just in time for winter hiking. Whether your school group, family, or friends are interested in taking advantage of this heart-healthy, low-impact winter recreation, you may now experience a hike with the new technology in snowshoes.

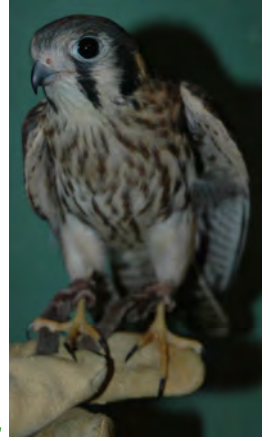
## Rocks, Fossils & More!

Thanks to our *Friends Group* and members *Dave and Connie Huber*, the gift shop at the Eagle View Eco Center now has many new items for purchase, including Iowa's state rock – can you guess? Plus, various minerals and fossils all native and collected in Iowa!



## Sponsor an Animal

If you are interested in sponsoring an animal, including our new female American kestrel, please contact us at (563) 328-3286 for details or visit our website.



## Fall Field Trip Attendance

Approximately 2,748 students, teachers and parents participated in 47 field trips this fall. An *emphasis on supporting the Iowa Core* will enhance future programming for Iowa school programming.

If you are an educator and would like to schedule a winter or spring field trip, we recommend that you call well in advance if possible. *To set up a field trip*, you may download a *Field Trip Planner* from our website: [www.scottcountyiowa.com/conservation/wapsi\\_education.php](http://www.scottcountyiowa.com/conservation/wapsi_education.php) and contact us at (563) 328-3286.

## The W.R.E.N is Green!

Please remember that you may now visit our website and sign up to get *The W.R.E.N.* in an effort to *protect, conserve, and preserve our vital resources*. Please contact us if you require a mailed version. Don't forget – we are also on Facebook: [www.facebook.com/scottcountyconservation](http://www.facebook.com/scottcountyconservation).

# IN APPRECIATION OF YOUR SUPPORT OF THE WAPSI RIVER CENTER

Aubrey Cover  
Ryan Seaba  
Mike Levsen

Bill Robbins  
Wisdom Seekers  
Dave & Connie Huber

Mr. & Mrs. Varcho  
Clare & Lizzie Murcia  
Gander Mountain

# IN MEMORY OF DOTTIE WALA

Erma Wiszmann  
Ingrid Bogdanowicz  
Lucia Dryanski  
James & Julie Ross  
K. J. Rebarcak  
Carol Rogers  
Vivian Norton  
Gloria Osborne

Carlene K. Erikson  
Mary T. Grapp  
Molly Teigland  
Jim & Maureen Schebler  
Ann Hailey  
Jan K. Popehn  
Jeanne & Robert Nakamaru  
Harvey & Jackie Erickson

Florence Whisler  
Henry & Vivian Becker  
Paul & Mary Humphrey  
L. Sue Witte  
Christine Agy  
Nancy Kothen-Beutel  
Jo Ellen Langerman

# IN MEMORY OF DOTTIE WALA



the Wapsi River Center).

Dottie Wala joined the Friends of the Wapsi Center, a citizen's volunteer group, when it began in January of 1993. At the time, she expressed, "that's something I need to be involved in." There were 6-8 people at the first meeting organized by Bob Bryant (then Director of

In the early days, Dottie was at the Center almost every week, working on buildings that were under renovation and clearing trails. In the years since, Dottie has been involved in a myriad of activities, including hosting the Eagle View Eco Center on the weekends, Winter Fun Days, volunteer workdays, staffing the Center's booth at Bald Eagle Days and helping with visiting school groups and youth groups during the summer.

Dottie Wala grew up in suburban Philadelphia, PA with four siblings. She enjoyed her childhood years exploring streams, woodlands and farmsteads. She described her family as "rabid outdoor enthusiasts".



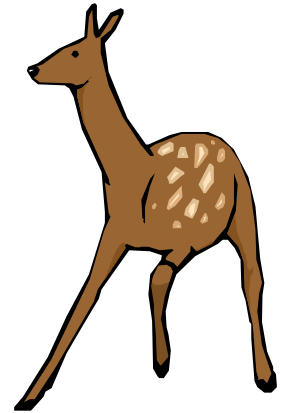
Dottie went to college in Ohio, married her husband Jerry, moved to Alaska for two years, and then lived in Seattle, WA (where they climbed in the Cascades and hiked Mount St. Helens – before the eruption – with their young son). Eventually Dottie, Jerry and their son, moved to Iowa.

She worked for the Davenport Public School System as a Library Teacher at Madison and Eisenhower Elementary schools for almost three decades until retiring in 2002.

Below is a submission to *The W.R.E.N.* by Dottie

"Coming upon a young deer suddenly, as I rounded a bend in the trail, it plunged wildly into the scrub brush and trees nearby. Who was more startled? Who's heart raced more wildly as I came to an abrupt stop and stared at the hole in the brush into which the deer had so quickly and thoroughly disappeared?"

"Every hike at the Wapsi is a new discovery for me as I encounter nature in a quiet, usually not-so-dramatic, way. It could be an owl spotted in a pine tree overhead, a bank of Dutchmen's Breeches just blooming in the spring, finding small animal tracks in the winter snow or hearing the chorus frogs in the pond in early summer. There's always something to see, to hear, to smell."



"Belonging to the *Friends of the Wapsi* gives me an opportunity to contribute something to this place; to introduce others to this unique experience. I host the Center a couple of times each month, get to know the staff and other members of this group with similar interests, and help with special events."

Current *Friends'* member, Lucia Dryanski, comments, "We all expected Dottie to have many, many years of these activities ahead of her. After all, she and her mom hiked the Grand Canyon when her mom was in her 80s! But four years ago, after riding her bicycle to her aerobics class, Dottie experienced some right-sided weakness. She was diagnosed with a brain tumor. But even while coping with surgery, chemo, and the progression of her illness, she continued to participate in the Friends' group, whenever able, attending meetings and hosting the Center."

Dottie's contributions to the Wapsi River Center have enriched the lives of all she encountered and her legacy will shine on.



# WILDLIFE PROFILE: NORTHERN PIKE

BY: JAMEY MEYER, SEASONAL ASSISTANT NATURALIST

“Get the net!” “Get the net!” I frantically yelled to my friend Andy as I just hooked into a monster fish along the Wapsipinicon River. I watched my pole bend in half and listened to my drag zing out across the water. I knew right away I had something huge on! This fish swam from one side of the river to the other, ferociously splashing out of the water every so often. After a few minutes of playing tug of war



with this beast, Andy was finally able to net the fish and bring him onto shore. After getting a closer look we were able to identify the fish as a northern pike. After quickly taking a couple photos, we released the fish back into the water and tried to catch more.

The northern pike, (*Esox lucius*) gets its name from its resemblance to the pole-weapon, known as the pike (from the Middle English term “pointed”). The genus name, *Esox* comes from the Greek and Celtic name for “big fish” and “salmon”. Other common names for this fish are the American pike, common pike, northern, grass pike, snake and jackfish.

*Esox lucius* is found in freshwater throughout the northern hemisphere, including Russia, Europe, and North America. The northern pike is a native fish to Iowa and happens to be very common along the Wapsipinicon River.

Typically, they are dark green to olive-green with irregular rows of yellow spots on their sides.



Northern pike also have a long narrow body and a flat, duck-shaped jaw loaded with razor sharp teeth.

Most northern pike in the Wapsipinicon River range between 2 and 6 pounds; however, the state record tops out at 25 pounds and 5 ounces!

Pike are found in shallow and sluggish water with thick vegetation. They are typically ambush predators that lie on the bottom of a stream and wait for prey to arrive. The young fish or “fry” feed primarily on insects and larvae, but as the fish matures it typically feeds on other fish. Fish such as drum, suckers, sunfish, shiners and smaller northern pike are common meals; however, pike have also been known to eat small muskrats, ducklings and shorebirds. The backwaters of the Mississippi and Wapsipinicon Rivers are the ideal habitat to contain these fish

Northern pike spawn in the spring when the water temperature is approximately 45-50°F. A larger female, usually accompanied by several smaller males find their way into the calm, grassy backwaters during the breeding season. The females lay their eggs in thick vegetated areas to reduce the risk of the eggs being eaten by other predators. The females do not make a nest for the eggs, nor do they provide any care to the eggs after they are laid. Once laid, the eggs take about two weeks to hatch. Pike normally have a lifespan of 5 to 15 years, but can be as old as 30!

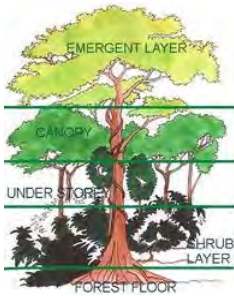
The backwaters of the Mississippi and Wapsipinicon Rivers provide great angling opportunities to catch this illusive fish. Northern pike are most active in colder water, so I have found the best time to catch them is early spring and late fall. While I will not disclose my “secret” pike lure, I will tell you northerns bite on a number of different lures including spoons, crankbaits and twister tails. Sometimes these fish are stubborn and you have to make several casts in an area before landing one. Now that you know a little more about the northern pike, go out and catch some of



Common lure for northern pike: a dare-devil spoon.

# PLANT PROFILE: WILD GRAPE

BY: MICHAEL J. GRANGER, NATURALIST



While strolling through the winter woods here at the Wapsi River Environmental Education Center, one can easily view the horizontal layers of the forest. Fifty to one hundred foot trees reach upward and make up the canopy layer. Below that are smaller trees, within the understory, which includes young trees that will eventually replace the canopy layer. Below fifteen feet, is the shrub and vine layer which includes species that inhabit woodland edges where sunlight is available for growth.

There are several “viney” species at the Wapsi River Center. One of the larger vines common at the Center and found throughout Iowa’s woodland riverbanks and thickets is the wild grape, *Vitis riparia*. It is also commonly referred to as riverbank grape. Poison ivy (*Toxicodendron radicans*), Virginia creeper (*Parthenocissus quinquefolia*) and greenbrier (*Smilax rotundifolia*) are especially prevalent at the Wapsi River Center.

Identifying vines can be tricky, but here are some quick helpful hints. Poison ivy is known for its twining stems and its aerial roots, giving it a hairy appearance. Virginia creeper has small adhering discs known as holdfasts which anchor the vine to a supporting structure. Greenbrier is known for its green stems with black thorns which are quite numerous near the base of the vine. Wild grape is known for its many tendrils. The wild grape uses these tendrils to climb to surprisingly great heights. Tendrils naturally wrap around any object that they touch; similar to green beans in a garden. They are touch sensitive and will grow slowly on the side that is touching the object, while the far side grows at a normal rate. This results in coiling, which provides the vine with a secure hold on the climbing surface.

Young grape vines are green or even a dark red. Grapevines normally grow over an inch in diameter and a large vine can measure more than 3 inches in diameter! Generally, the bark is grayish-brown and may slough off in long strips with age. I have seen grape vines which have grown to incredible heights into the upper canopy layer.

There tendrils can be so secure that large vines can support a substantial amount of weight. Wild grape leaves are quite distinguishable, but are somewhat variable. Large leaves are 6-8 inches long and nearly as wide. The leaves grow alternately along the stem, are toothed and have shallow lobes.



During late summer months, wild grape produces bunches of tiny green flowers borne in loose clusters in a stem arising from the upper leaves. The minute flowers have a pleasant smell and can be an intoxicating perfume where grape vines are abundant. In the fall, the flowers develop into fruits which turn to a frosty blue or black about the time of the first frost. Single grapes contain 2-4 seeds and may be as large as a ½-inch in diameter.

The fruits of wild grapes were gathered in great quantities by Native Americans. These were dried for winter use. Early settlers made jams and jellies, and harvested the fruits for a delicious snack right from the vine. Upon cutting a larger grapevine the sap collected was thought to have calming properties for the stomach and intestines. The juice was also thought to be a cure for insanity; even though the fruits are fermented and bottled. Many animals utilize wild grapes for food. Deer, raccoon, fox, rabbits, skunks, turkeys, doves and quail regularly eat the fruits. Nearly 100 songbirds are also known to feed on grapes.

During the fall and winter, grapevines can be used in making wreaths or other decorations. One can make a grapevine ball, by wrapping a beach ball with grapevine. If you have grapevine in your neck of the woods, you have a great natural resource. When collecting, be sure to remember to always ask permission beforehand and leave the roots intact to encourage new growth.



# January

**19<sup>th</sup> ~ Friends of the Wapsi River Center, Inc. Meeting ~ 7:00 P.M. ~ Gander Mountain** ~ Join us at the Gander Mountain store in Davenport to learn about current events, happenings and volunteer opportunities at the Wapsi River Center.



**21<sup>st</sup> ~ Snowshoe Tracking ~ 10:00 A.M. ~ Wapsi River Center** ~ Come explore the wintry wilderness at the Wapsi River Center via snowshoes. Learn about the history of snowshoes and then search for animal tracks and signs of

activity. Winter fun for everyone! Please call to reserve equipment; (563) 328-3286. **BYOM ~ Bring your own mug.**

**21<sup>st</sup> ~ Cross-country Ski Clinic ~ 12:30 P.M. ~ Wapsi River Center** ~ Come learn the basics of cross-country skiing and tour the Wapsi Center trails; if conditions allow. Participants will learn about proper skiing techniques, safety and equipment. Please call (563) 328-3286 to register, as a limited number of equipment is available. Participants may bring their own equipment as well.

**28<sup>th</sup> ~ Hunter Education Class ~ 9:00 A.M. - 1:00 P.M. ~ Scott County Park (Old Nature Center)** ~ Scott County Park Rangers will be teaching a Hunter Education Online Field Day at the old nature center. Participants must be 16 years old or older and have completed the online hunter safety training at [www.HunterExam.com](http://www.HunterExam.com) or [www.hunter-ed.com/Iowa](http://www.hunter-ed.com/Iowa); participants must bring voucher to class. This is a review class with no firing. Participants will need to bring a sack lunch and beverage. Please call (563) 328-3282 to register.

**28<sup>th</sup> ~ Toasty Toes Workshop ~ 1:00 - 3:00 P.M. ~ Wapsi River Center** ~ Converting a pile of



outgrown or underutilized t-shirts into colorful, cozy rugs has never been easier; especially with the help of a most unique loom – a hula hoop! Each participant needs to bring about a dozen T-shirts (boy's size L or equivalent

# Winter

(men's/women's size S or girl's size L/XL) work well, but other sizes can be adapted) and a pair of sharp, fabric scissors. If you have access to a quilting tool called a rotary cutter, consider bringing it with the mat and ruler. Looms will be provided. This program is ideal for beginning weavers, and would appeal to families, scout groups as well as individuals. Walk-ins are welcome, but pre-registration is appreciated by calling (563) 328-3286. **Note:** *If this program appeals to you but you can't make the date, Jessica Steines (Clinton County Interpretive Naturalist) will be conducting a similar program on March 20, 6:00 P.M. at Rock Creek Marina & Campground. Please call (563) 847-7202 by March 19 to register for her program.*

# February

**11<sup>th</sup> ~ Winter Fun Day ~ 9:00 A.M. - 6:30 P.M. ~ Wapsi River Center** ~ Come to the Wapsi River Center for a fun-filled day of winter activities. This is an event the whole family can enjoy, so plan to come out and discover winter at its best. A limited number of skis and snowshoes are available, so please call to reserve equipment; (563) 328-3286. **BYOM ~ Bring your own mug.**



**9:30 A.M. ~ Cross-country Ski Clinic** ~ Come learn the basics of cross-country skiing and tour the Wapsi Center trails; if conditions allow. Participants will learn about proper skiing techniques, safety and equipment. Participants may bring their own equipment.

**12:30 P.M. ~ Snowshoe Nature Hike** ~ Join Michael Granger on this excursion into the Wapsi River Center's woodlands. We will be traveling the way of the Native Americans and early pioneers, looking for signs of life in the still, winter woods.

# Events

**2:00 P.M. ~ Winter Bird Feeding** ~ Come learn how to identify winter birds; plus how to attract and feed our feathered friends. Fun for all ages!



**3:00 P.M. ~ Fabulous Furs** ~ Join a Wapsi naturalist to explore mammals that live in our area. Learn how they adapt and thrive during the cold winter

months. Explore the history of fur trapping, trading and how the animals were used.

**4:30 P.M. ~ 5<sup>th</sup> Annual Chili Cook-off** ~ The Friends of the Wapsi Center, Inc. will be hosting this annual competition. Please bring your best chili creation to share, and possibly win the coveted chili cup!!! Donations are accepted, and please bring your own table setting.



**5:30 P.M. ~ Frostbite Star Party** ~ Winter is a great time for astronomy. The sky is never clearer than on cold, winter nights. The winter constellations center on Orion, the Great Hunter. In the sword hanging from Orion's Belt, one can find the Orion Nebula, which is one of the most spectacular objects to be

seen through a telescope. The St. Ambrose University's Menke Astronomical Observatory is the location; park in lot A.

**16<sup>th</sup> ~ Friends of the Wapsi River Center, Inc. Meeting ~ 7:00 P.M. ~ Gander Mountain** ~ Join us at the Gander Mountain store in Davenport to learn about current events, happenings and volunteer opportunities at the Wapsi River Center.

**18<sup>th</sup> ~ Hunter Education Class ~ 9:00 A.M. - 1:00 P.M. ~ Scott County Park (Old Nature Center) ~**

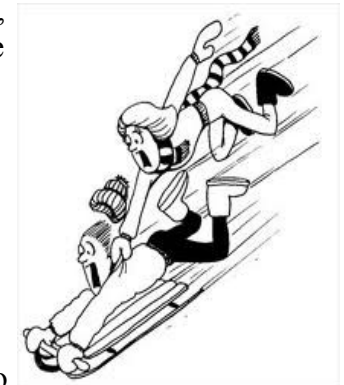
Scott County Park Rangers will be teaching a Hunter Education Online Field Day at the old nature center. Participants must be 16 years old or older and have completed the online hunter safety training at [www.HunterExam.com](http://www.HunterExam.com) or [www.hunter-ed.com/iowa](http://www.hunter-ed.com/iowa); participants must bring voucher to class. This is a review class with no firing. Participants will need to bring a sack lunch and beverage. Please call (563) 328-3282 to register.



**18<sup>th</sup> ~ "Get Outdoors" Day ~ 1:00 - 4:00 P.M. ~ Scott County Park (Whispering Pines Shelter) ~** Come join Wapsi River Center naturalists to explore and enjoy a few healthy, winter recreational activities like cross-country skiing, snowshoeing (please bring winter boots), hiking and sledding (please bring your own).

Equipment will provided throughout the day on a rotating basis. We will have the shelter to warm up, plus hot drinks will be provided – BYOM (bring your own mug).

Participants are welcome to bring a "picnic" lunch as well to enjoy by the fire! This event is weather dependent; if conditions are not favorable the event will be cancelled. Please call (563) 328-3286 to register.



**25<sup>th</sup> ~ Natural Charcoal Art ~ 11:00 A.M. ~ Wapsi River Center** ~ Have you ever wanted to make your own drawing charcoal? Well, now you can! Join Aaron Askelson to learn how to create our own charcoal and put it to the test by drawing your own winter outdoor scene. Please bring paper and BYOM – Bring Your Own Mug. Please call (563) 328-3286 to register.

**25<sup>th</sup> ~ Maple-Syruping Demonstration ~ 1:00 P.M. ~ Wapsi River Center** ~ Join Tom Greene as he discusses the history and procedure of tapping trees for syrup. Handouts and where to find tapping equipment will be provided to participants. Please call (563) 328-3286, if you are interested in attending.

# March

**3<sup>rd</sup> ~ Bluebird House Workshop ~ 10:00 A.M. ~ Wapsi River Center** ~ Join Aaron Askelson to learn about bluebirds and build a bluebird house. Participants will also learn about the correct placement and maintenance of the boxes. Kits will be available for \$5.00 each. Please call (563) 328-3286 by Thursday, March 1 to register, and state the number of kits you would like to reserve.



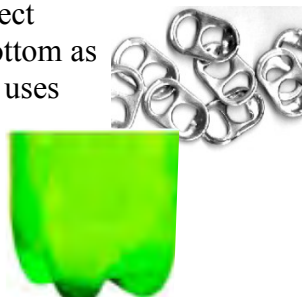
**3<sup>rd</sup> ~ Maple-Syruping Demonstration ~ 1:00 P.M. ~ Wapsi River Center** ~ Join Tom Greene as he discusses the history and procedure of tapping trees for syrup.

Handouts and where to find tapping equipment will be provided to participants. Please call (563) 328-3286, if you are interested in attending.

**10<sup>th</sup> ~ Hunter Education Class ~ 9:00 A.M. - 1:00 P.M. ~ Scott County Park (Old Nature Center)** ~ Scott County Park Rangers will be teaching a Hunter Education Online Field Day at the old nature center. Participants must be 16 years old or older and have completed the online hunter safety training at [www.HunterExam.com](http://www.HunterExam.com) or [www.hunter-ed.com/Iowa](http://www.hunter-ed.com/Iowa); participants must bring voucher to class. This is a review class with no firing. Participants will need to bring a sack lunch and beverage. Please call (563) 328-3282 to register.

**15<sup>th</sup> ~ Friends of the Wapsi River Center, Inc. Meeting ~ 7:00 P.M. ~ Wapsi River Center** ~ Join us at the Wapsi River Environmental Education Center to learn about current events, happenings and volunteer opportunities at the Wapsi River Center.

**17<sup>th</sup> ~ A Tisket, A Tasket, A Recycled Trinket Basket ~ 1:00 - 3:00 P.M. ~ Wapsi River Center** ~ This hands-on, recycling project utilizes a plastic pop bottle bottom as the base for the basket. Then uses “plarn” (plastic yarn) and pop can tabs to create a decorative edge around the top. Basic sewing skills are needed to complete



project. A great project for scout groups! Walk-ins are welcome, but pre-registration by Thursday, March 15, is appreciated by calling (563) 328-3286.

**24<sup>th</sup> ~ Trout Release ~ 10:30 A.M. ~ West Lake Park** ~ Trout will be released by representatives from the Iowa Department of Natural Resources at West Lake Park. This year there will be 1,800 rainbow trout released at Lake of the Hills. Come join us for this spectacular event!



**April** *Spring Sneak Peek ~ more events to come in the spring newsletter*

**14<sup>th</sup> ~ Hunter Education Class ~ 9:00 A.M. - 1:00 P.M. ~ Scott County Park (Old Nature Center)** ~ Scott County Park Rangers will be teaching a Hunter Education Online Field Day at the old nature center. Participants must be 16 years old or older and have completed the online hunter safety training at [www.HunterExam.com](http://www.HunterExam.com) or [www.hunter-ed.com/Iowa](http://www.hunter-ed.com/Iowa); participants must bring voucher to class. This is a review class with no firing. Participants will need to bring a sack lunch and beverage. Please call (563) 328-3282 to register.

**19<sup>th</sup> ~ Friends of the Wapsi River Center, Inc. Meeting ~ 7:00 P.M. ~ Wapsi River Center** ~ Join us at the Wapsi River Environmental Education Center to learn about current events, happenings and volunteer opportunities at the Center.

**21<sup>st</sup> ~ Earth Day Expo/Quad Cities Earth Week Fair ~ 10:00 A.M. - 4:00 P.M. ~ QCCA Expo Center** ~ The Quad Cities Earth Week Coalition is hosting its 9<sup>th</sup> annual Earth Week Fair at the QCCA Expo Center in Rock Island, IL. This event is free to the public and will feature over 60 booths offering hands-on activities, demonstrations, make-and-take crafts, literature, videos, quizzes and other interactive projects. For more information: [www.qcearthweek.org](http://www.qcearthweek.org) or contact Erin Robinson-Vorac at (563) 388-1403 or [evorac@wastecom.com](mailto:evorac@wastecom.com).





# Conservation and Wildlife Directory

## Scott County, Iowa

### **Hunter Safety Classes**

Hunter safety classes are offered by Scott County Conservation Board and held either at Scott County Park or West Lake Park. To register for these classes visit the DNR's website at [www.iowa.dnr.gov/training](http://www.iowa.dnr.gov/training) or call (563) 328-3282 #1 for more information. Terry Nims is the Recreational Safety Officer for our region and can be reached at (563) 357-1812.

### **Iowa State University Extension**

Scott County ISU Extension and Outreach will assist you with your horticulture, fertilizer and pesticide questions. They are also home to 4-H and other educational opportunities. For more information about the ISU Extension office visit: [www.extension.iastate.edu/scott](http://www.extension.iastate.edu/scott) or (563) 359-7577.

### **Agricultural Assistance**

Natural Resource Conservation Service, Farm Service Agency and Scott County Soil and Water Conservation District are agencies that oversee the numerous farm programs available to local farmers and landowners. They may provide financial and/or technical assistance in soil conservation practices, wetland and native grass restoration, tree planting and pond construction. The SWCD can be reached at (563) 391-1403 #3.

### **Noxious Weeds**

Scott County Secondary Roads will take your concerns regarding noxious weeds on both public and private lands. They can be reached at (563) 326-8640.

### **Adoptions and Contact Information**

Humane Society of Scott County (563) 388-6655 provides a home for animals that are neglected or

abused. For more information visit: [www.hssc.us](http://www.hssc.us).

### **Injured Raptors**

Macbride Raptor Project is located on the Kirkwood Community College Campus in Cedar Rapids, Iowa. Macbride is dedicated to rejuvenating injured raptors such as hawks, owls, falcons and eagles. If you come across one of these injured birds, contact them at (319) 398-5495 immediately. Don't forget to leave a message with your name and phone number, and remember they are staffed by volunteers, so your call will be returned as soon as possible. For more information visit: [www.macbrideraptorproject.org/rehab](http://www.macbrideraptorproject.org/rehab).

### **Wildlife Rehab/Injured Wildlife**

DO NOT bring injured or orphaned wildlife to the Wapsi River EE Center, Scott County Park or West Lake Park. Scott County Conservation staff members are not rehabilitators and cannot help the animals in any way. We will be happy to assist you by serving as a contact point to the appropriately trained professionals. Keep in mind that oftentimes young wild animals are presumed to be abandoned or orphaned, when in reality the mother is just waiting for a safe time to return. Unless you know for certain the mother has left, it is best not to intervene.

### **Wildlife Law Enforcement**

Ed Kocal and Jeff Harrison are the Iowa DNR Conservation Officers for Scott County. Officer Kocal can be reached at (563) 349-8953 and Officer Harrison at (563) 349-9418. Their primary duties are to enforce fish and game regulations. If you have a game violation you would like to report anonymously, call TIP at 1-800-532-2020.

**Save Me! Save this directory for your personal reference.**

**WAPSI RIVER E. E. CENTER**  
**31555 52ND AVENUE**  
**DIXON, IA 52745**  
**Tel: (563) 328-3286**  
**Fax: (563) 843-2845**

*A  
P  
l  
a  
c  
e*



*For All Seasons*

**~ ~ ~ ~ ~ Eagle View Eco Center Hours ~ Saturdays ~ 12:30 - 4:30 P.M. ~ ~ ~ ~ ~**

The Wapsi River Environmental Education Center is a joint project between the Scott and Clinton County Conservation Boards. "The W.R.E.N." is published quarterly by the Wapsi River Environmental Education Center and the Scott County Conservation Board.

**Scott County Conservation Board**

Members:

John "Skip" O'Donnell  
Carol Fennelly  
Beth McAleer  
Rich Mohr  
Gene Weis

Director:

Roger Kean



**Phone Numbers**

Wapsi River Environmental Education Center  
(563) 328-3286

Scott County Conservation Board  
(563) 328-3280

Clinton County Conservation Board  
(563) 847-7202

**Wapsi River Environmental Education Center Staff**

Scott County:

J. Dave Murcia, Director/Naturalist  
Mike Granger, Naturalist  
Lisa Gerwulf, Assistant Naturalist  
Aaron Askelson, Seasonal Assistant Naturalist  
Jamey Meyer, Seasonal Assistant Naturalist  
LeRoy Haeffner, Caretaker

Clinton County:

Mark Roberts, E. E. Coordinator  
Chuck Jacobsen, Interpretative Naturalist  
Jessica Steines, Interpretative Naturalist

**Mailing List**

If you would like to receive "The W.R.E.N." and do not have internet access, please send a post card to the Wapsi River E. E. Center at the address above.

The Scott County Conservation Board in the provision of services and facilities to the public does not discriminate against anyone on the basis of race, color, sex, creed, national origin, age or handicap. If anyone believes they have been subject to discrimination, they may file a complaint alleging discrimination with either the Scott County Conservation Board or the Office of Equal Opportunity, U.S. Department of Interior, Washington D.C. 20240.